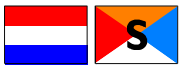
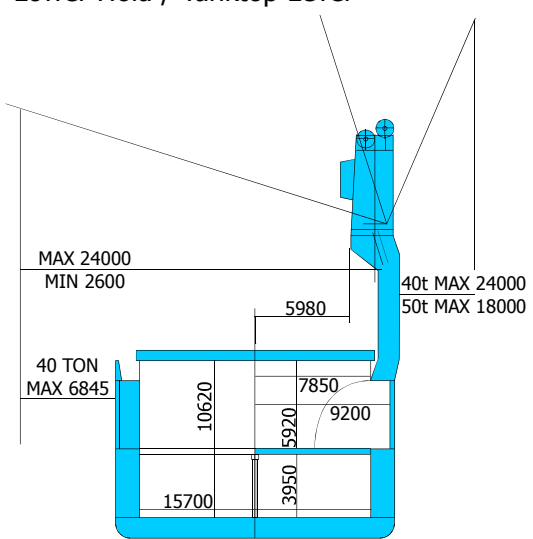
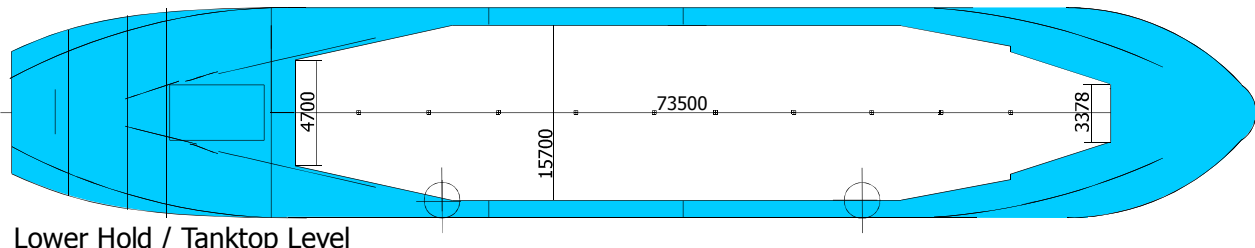
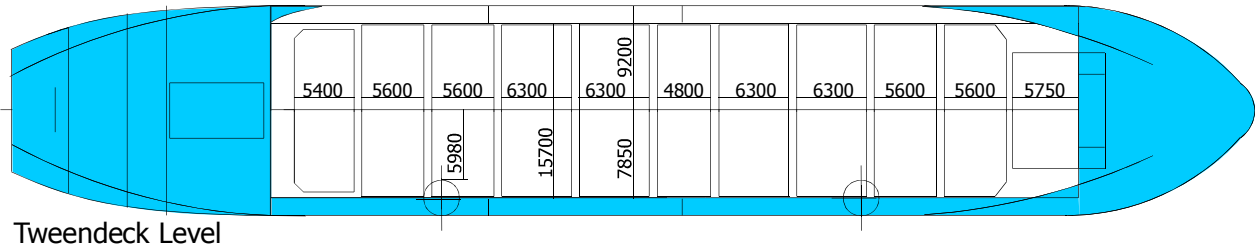
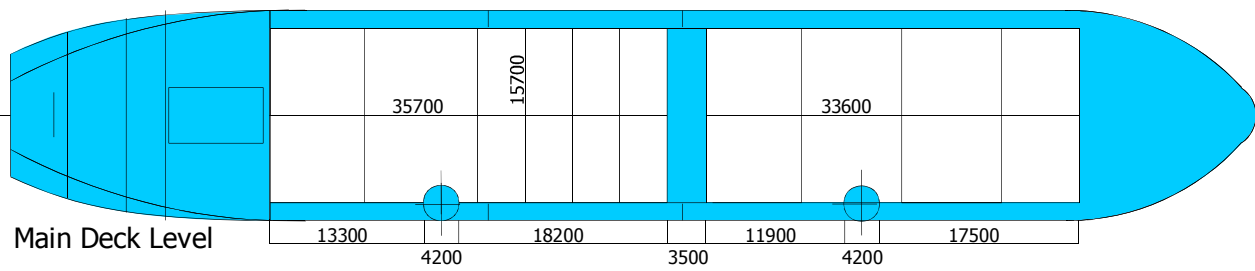
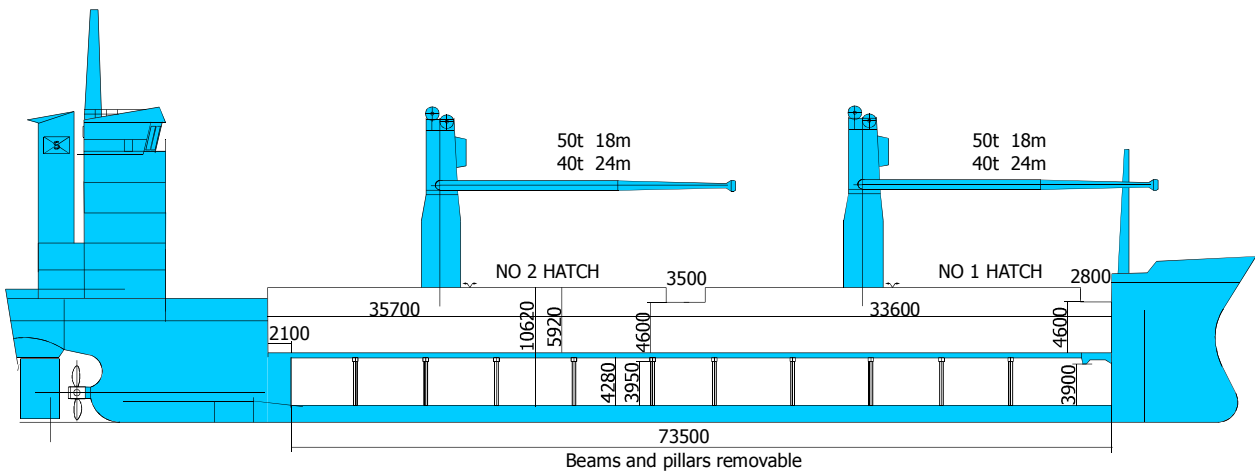


CLASS Ice Class Finnish/Swedish		LLOYD'S ✕ 100 A1 ✕ LMC – UMS 1A Strengthened for heavy cargoes; Great Lakes fitted optional ISM Certified		
PRINCIPAL DIMENSIONS				
Length over all		113,00 m		
Breadth moulded		18,90 m		
Height in hold as SID		10,62 m		
Height in lower hold as TWD		3,95 m		
Height in tween deck as TWD		5,92 m		
Summer draft		8,54 m		
Draft for timber		8,79 m		
GT		5.998		
NT		3.607		
DEADWEIGHT all told		9.653 mt		
Timbermark		10.123 mt		
CAPACITY		Grain	LH 161.000 + UH 283.000 = 444.000 cbft/12.750 m3	
		Bale	LH 161.000 + UH 257.000 = 418.000 cbft/11.840 m3	
FLOOR SPACE		Tank top	1.012 m2	
		Tween deck	1.114/1.312 m2	
		Weather deck	1.090/1.170 m2	
AIR CHANGES (basis empty holds)		Abt 25 x per hour		
CONTAINER INTAKE		TEU	FEU	+ TEU
Hold	Units	234	96	+ 42
Deck	Units	253	115	+ 23
Total	Units	487	211	+ 65
Without pedestals	Minus	18	8	2
Power available for reefer connections		Up to 360/450 kW		
TIMBER INTAKE		Abt 14.000 m3 length packages		
HATCHES		Weather deck	No 1: 33,60 x 15,70 m No 2: 35,70 x 15,70 m Steel, end folding type	
		Tween deck	70,70 x 15,70 m Steel, side folding type; beams and pillars removable	
Bulkheads/compartments		2 sets removable for up to 6 compartments		
MAXIMUM LOAD				
Weather deck hatch covers		1,75 t/m2		
Tween deck hatch covers		3,70 t/m2		
Tank top		20,00 t/m2		
DECK CRANES restricted combinable				
Situated on starboard side, tons/reach		2 of 50 mt SWL/18 m or 40 mt SWL/24 m		



MAIN ENGINE		Hanshin 6.000 HP/4.410 kW
Speed	Ballast	Abt 15 knots
	Laden	Abt 14 knots
Fuel consumption per day		Abt 16,5 mt IFO 380 Cst
		No MDO at sea, except when manoeuvring
BUNKER CAPACITY		
Intermediate Fuel Oil		594 m3
Marine Diesel Oil		120 m3
BALLAST CAPACITY		2.200 m3



P2
 Parkgracht (1986)
 Pietersgracht (1986)
 Poolgracht (1986)