

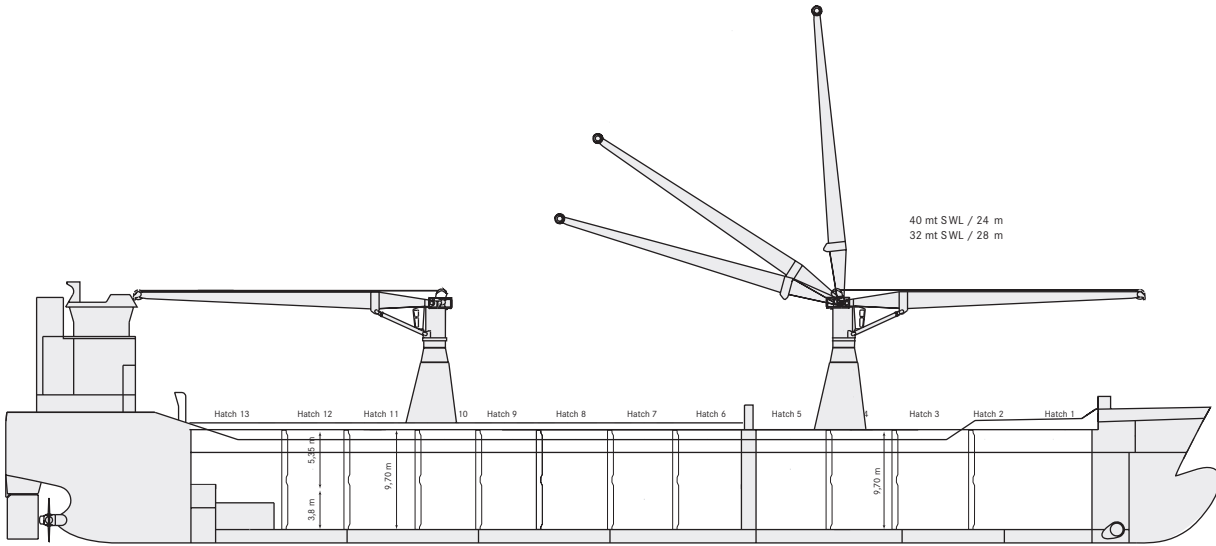
BANDURA

UNDER
MANAGEMENT

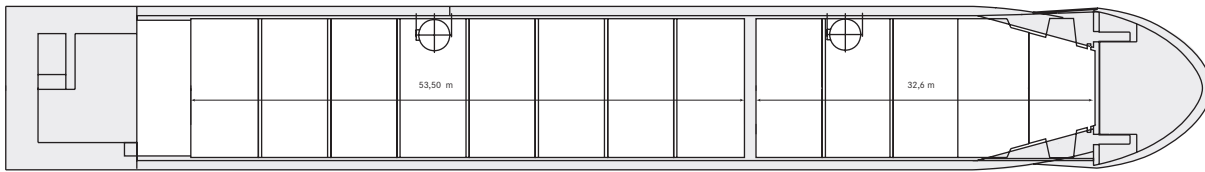


2010 BANDURA

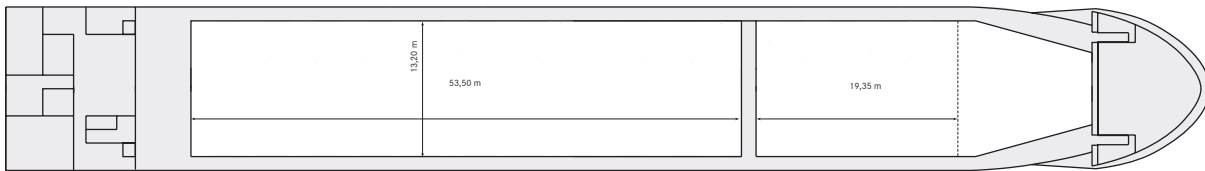
| CLASS | | |
|---|-------------------------------------|--|
| Classification | Lloyd's Register ✪ 100 A1 +LMC, UMS | |
| Ice-Class | Finnish/ Swedish 1A | |
| Fitted for carriage of dangerous goods | | |
| Fitted for trading Australia and Great Lakes | | |
| PRINCIPAL DIMENSIONS | | |
| Length over all | 118.14 m | |
| Breadth moulded | 16.13 m | |
| Height hold as SID | Hold 1: 9.70 m | |
| | Hold 2: 9.7 m | |
| Height lower hold as TWD | Hold 1: 3.80 m | |
| | Hold 2: 3.80 m | |
| Height tween deck as TWD | Hold 1: 5.35 m | |
| | Hold 2: 5.35 m | |
| Summer draft | Abt. 7.19 m | |
| GT | Abt. 5,425 | |
| NT | Abt. 2,949 | |
| DEADWEIGHT all told | Abt. 8,305 mt | |
| CAPACITY | | |
| Grain - bale | 371,155 cbft | /10,510 m ³ |
| FLOOR SPACE | | |
| Lower hold | 1,035 m ² | |
| Tween deck | 955 m ² | |
| Weather deck | 1,150 m ² | |
| AIR CHANGES (basis empty holds) | | |
| Hold 1 + 2 | Abt. 10 x p/h | |
| CONTAINER INTAKE | | |
| Total | Abt. 336 TEU | No fittings on board subject to stability |
| HATCHES | | |
| Weather deck | Hold 1: 32.60 x 13.20 m | |
| | Hold 2: 51.22 x 13.20 m | |
| | Pontoon type | |
| Tween deck | Hold 1: 21.35 x 13.20 m | |
| | Hold 2: 51.12 x 13.20 m | |
| | Consisting: 15 steel pontoons | |
| Bulkheads/compartments: Removable pontoons for up to 4 compartments | | |
| MAXIMUM LOAD | | |
| Weather deck hatch covers | 1.75 t/m ² | payload |
| Tweendeck hatch covers | 3.00 t/m ² | |
| Tank top | 17.00 t/m ² | |
| DECK CRANES | | |
| Position | 2 x situated on port side | |
| Tons /reach | 40 mt SWL/24 m | |
| | 32 mt SWL/28 m | |



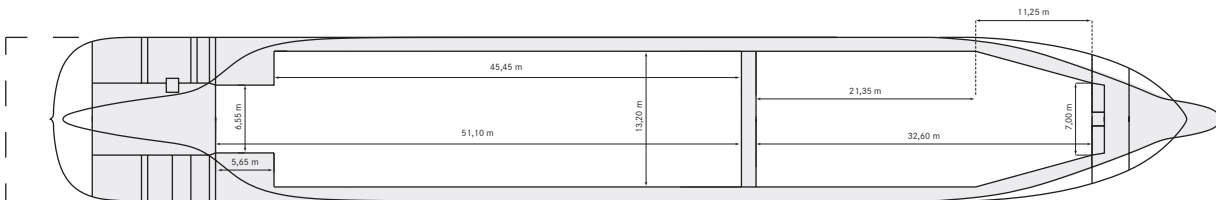
WEATHER DECK



TWEEN DECK



TANK TOP



BANDURA UNDER MANAGEMENT

These particulars are believed to be correct, but without guarantee, and they must not be used as basis for Charter Parties or contracts without explicit written authority. For more information please contact amsterdam@spliothoff.com